



COMUNE DI ASTI

Provincia di Asti

*INTERVENTO DI MANUTENZIONE
STRAORDINARIA SU
CAVALCAVIA/CAVALCAFERROVIA
"GIOLITTI"
CUP: G37H19001980004*

PROGETTO ESECUTIVO

STATO DI FATTO

SCHEMI E DOCUMENTAZIONE

FOTOGRAFICA

SPALLA P.A E PILE P.1-P.2-P.3-P.4

IL PROGETTISTA:

INGEGNERE
DOTT. ING. BOERO ELIO

appartenente allo studio tecnico B.Z. di
Dott. Ing. BOERO ELIO e Dott. Ing. ZAPPALÀ FELICE
Via Don Grivore, 15 - Villafranca d'Asti - AT
Tel/Fax 0141/943366 e-mail elio.boero@tin.it



L'AMMINISTRAZIONE:

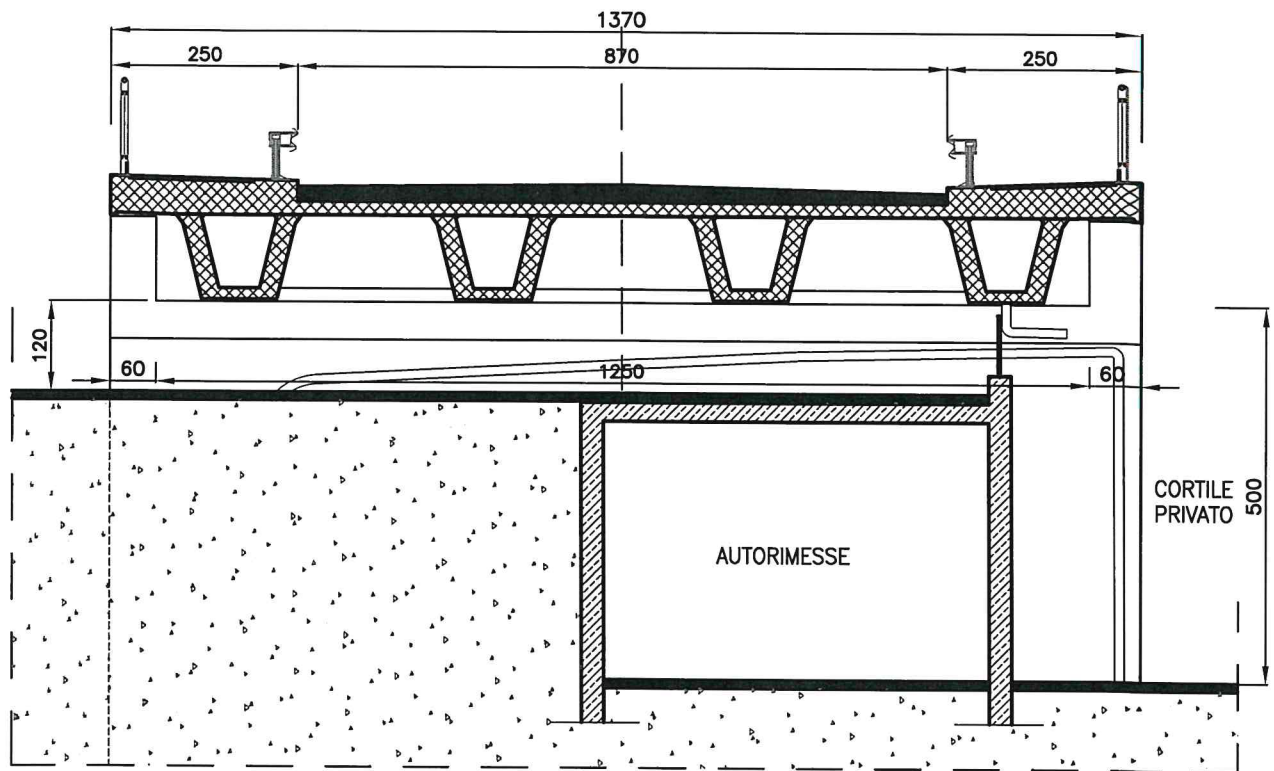
TAVOLA N.6

SCALA: 1:100

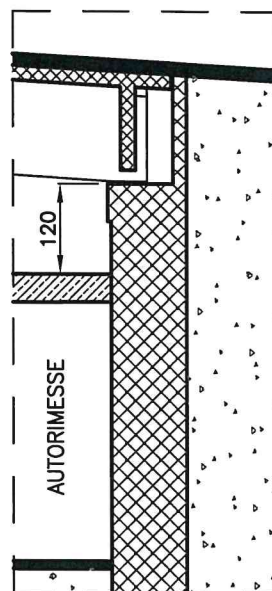
DATA: Novembre 2021

P.A

PIAZZA AMENDOLA



SEZIONE TRASVERSALE



SEZIONE LONGITUDINALE

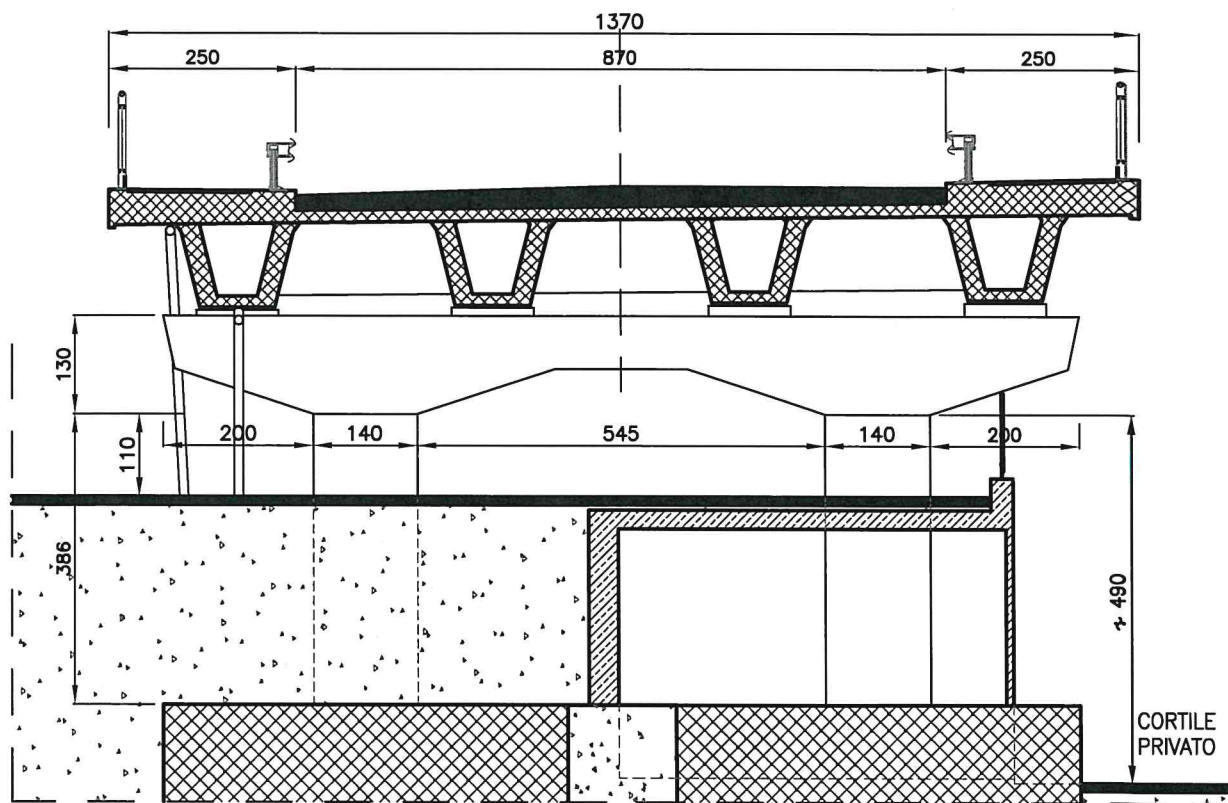




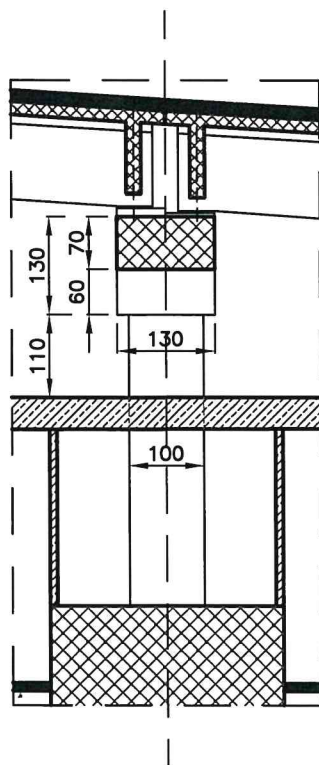


P.1

PIAZZA AMENDOLA



SEZIONE TRASVERSALE



SEZIONE LONGITUDINALE



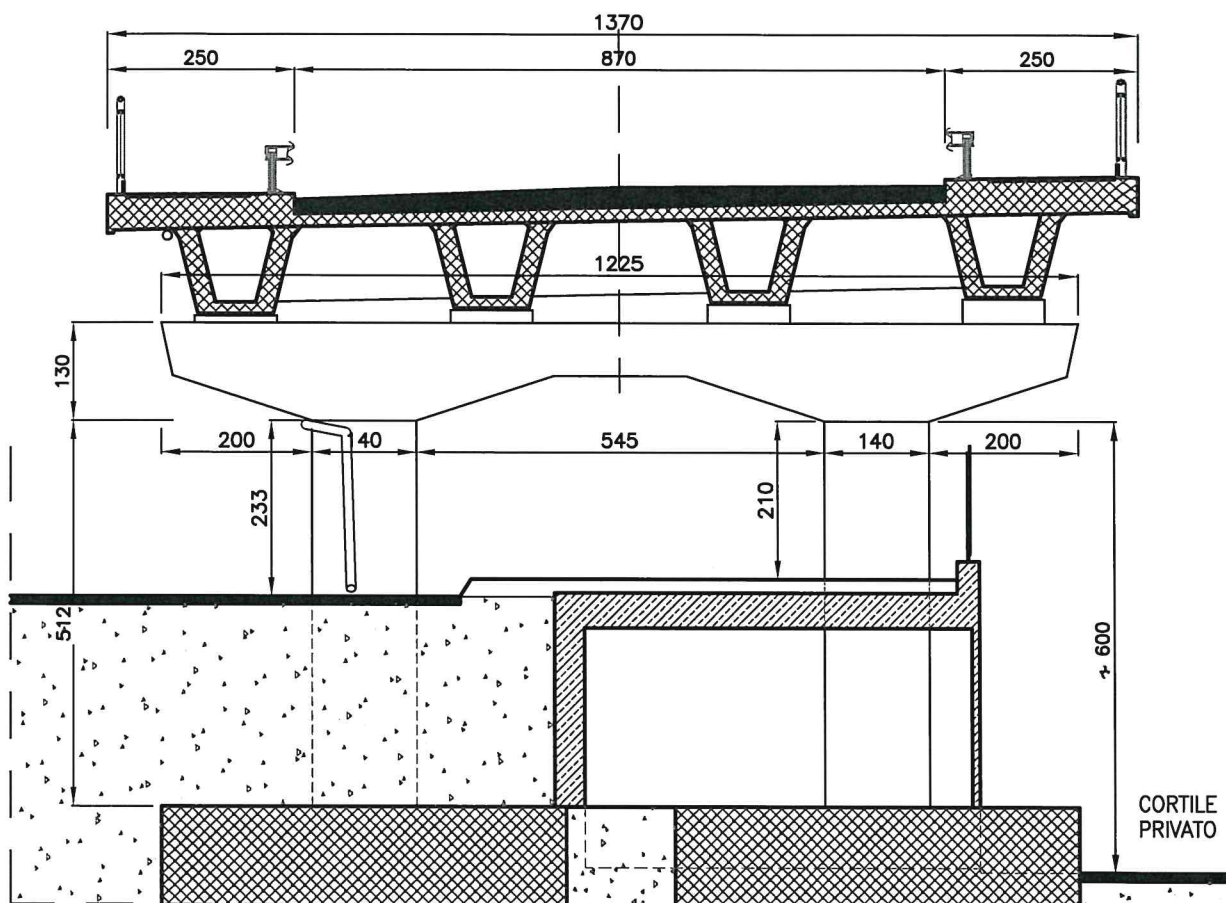




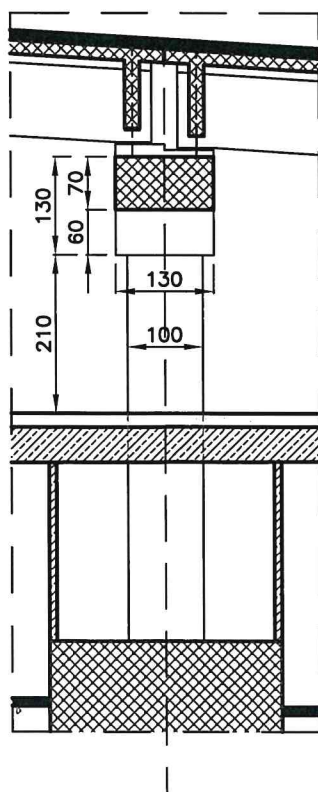


P.2

PIAZZA AMENDOLA



SEZIONE TRASVERSALE



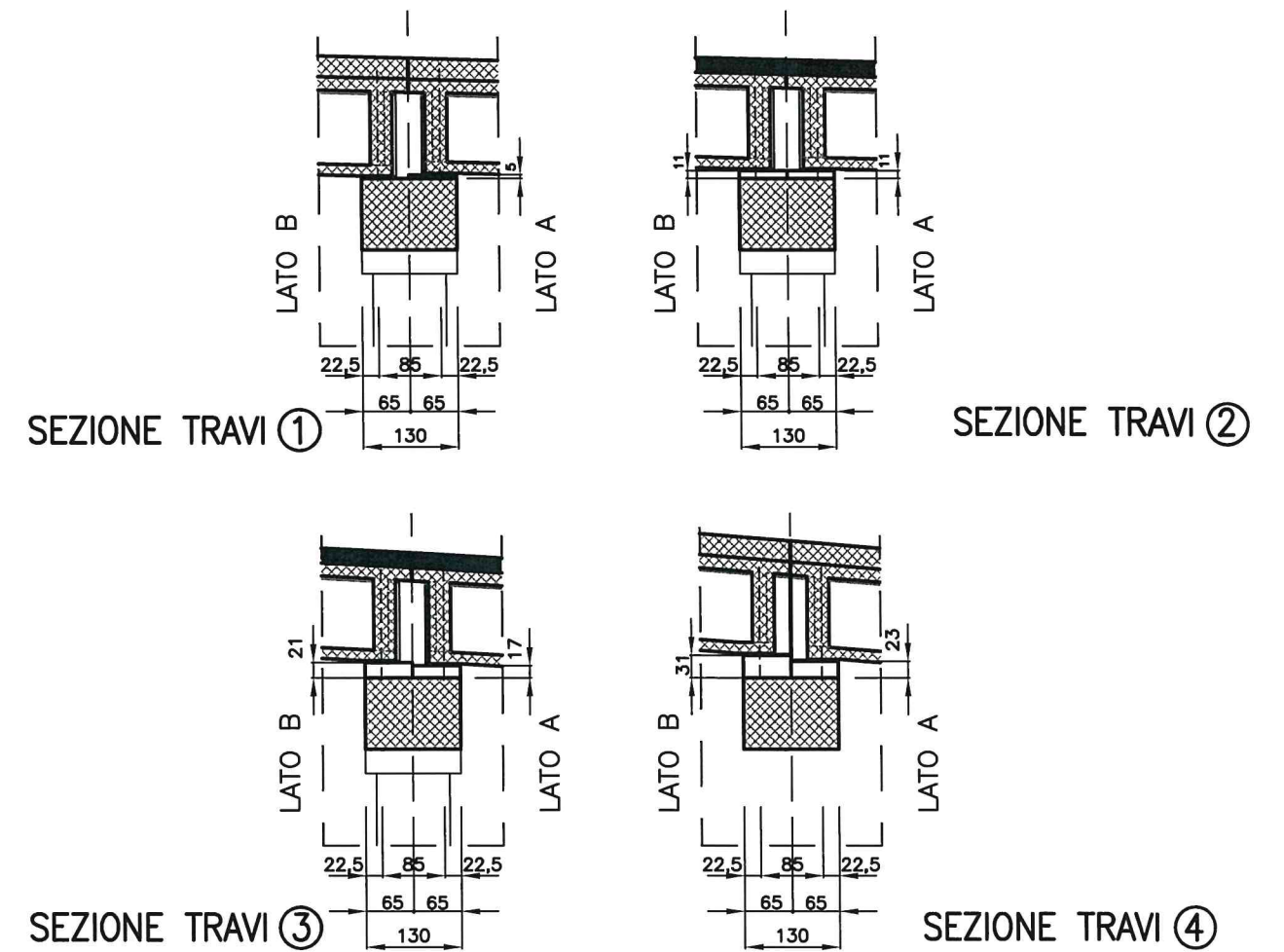
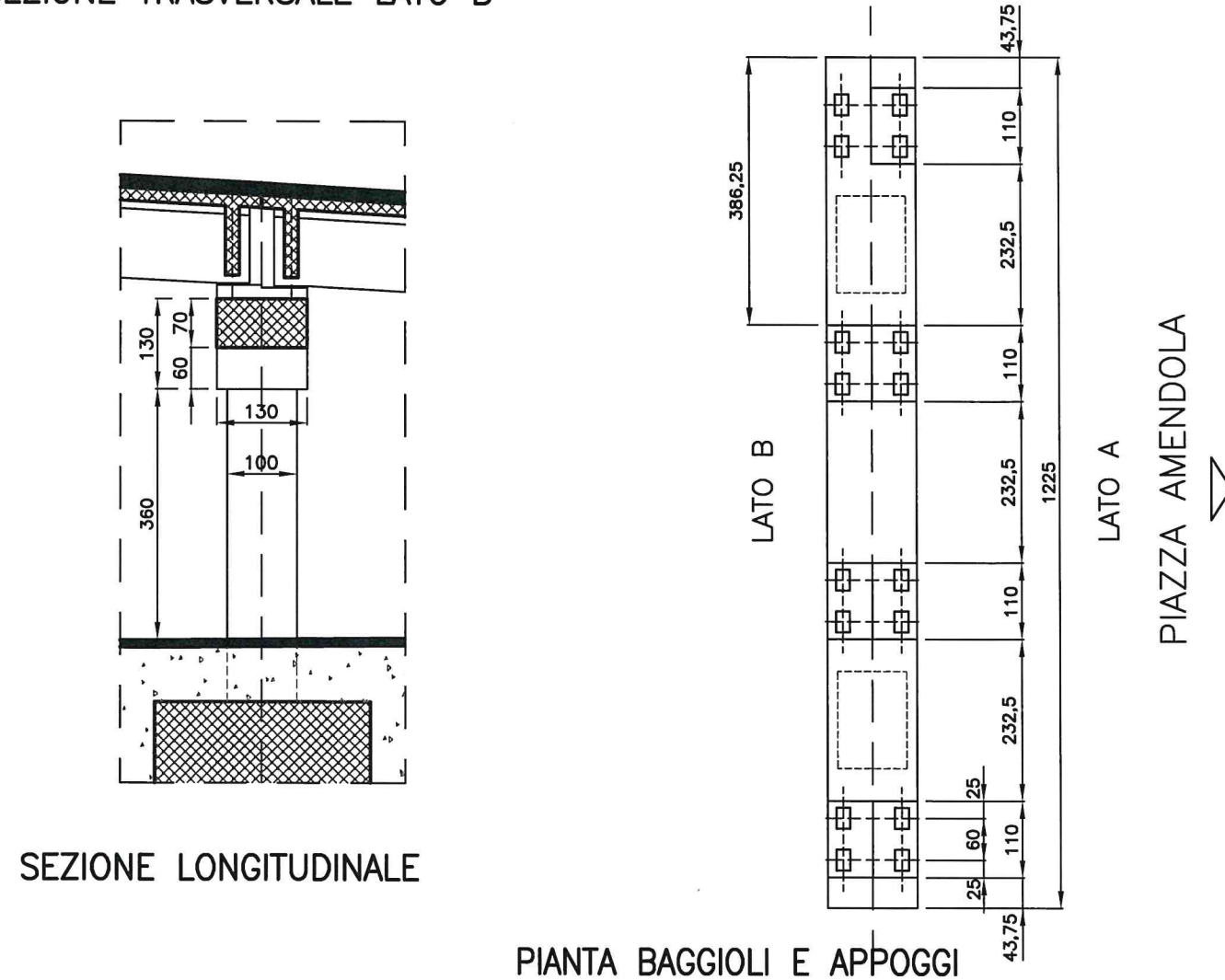
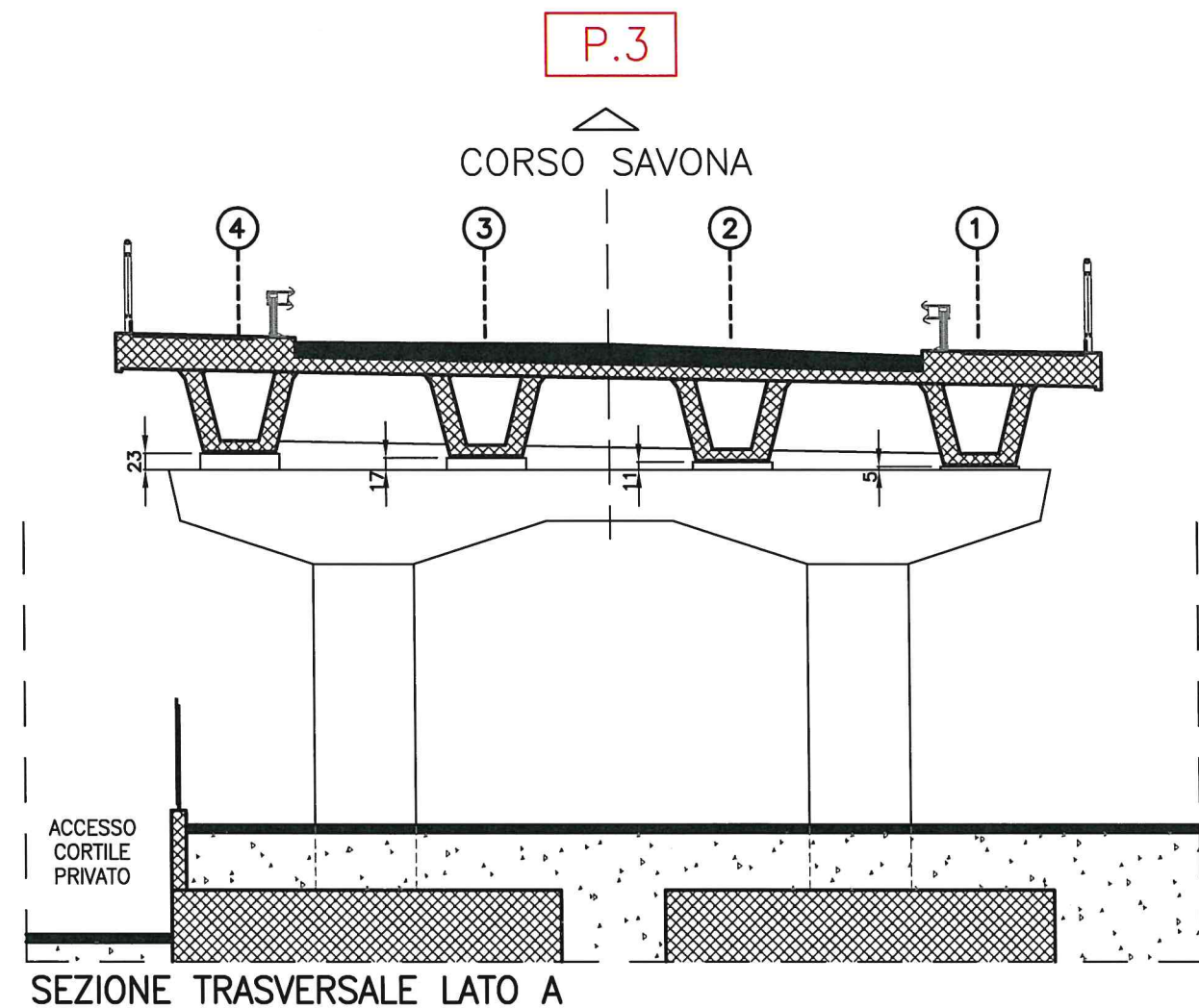
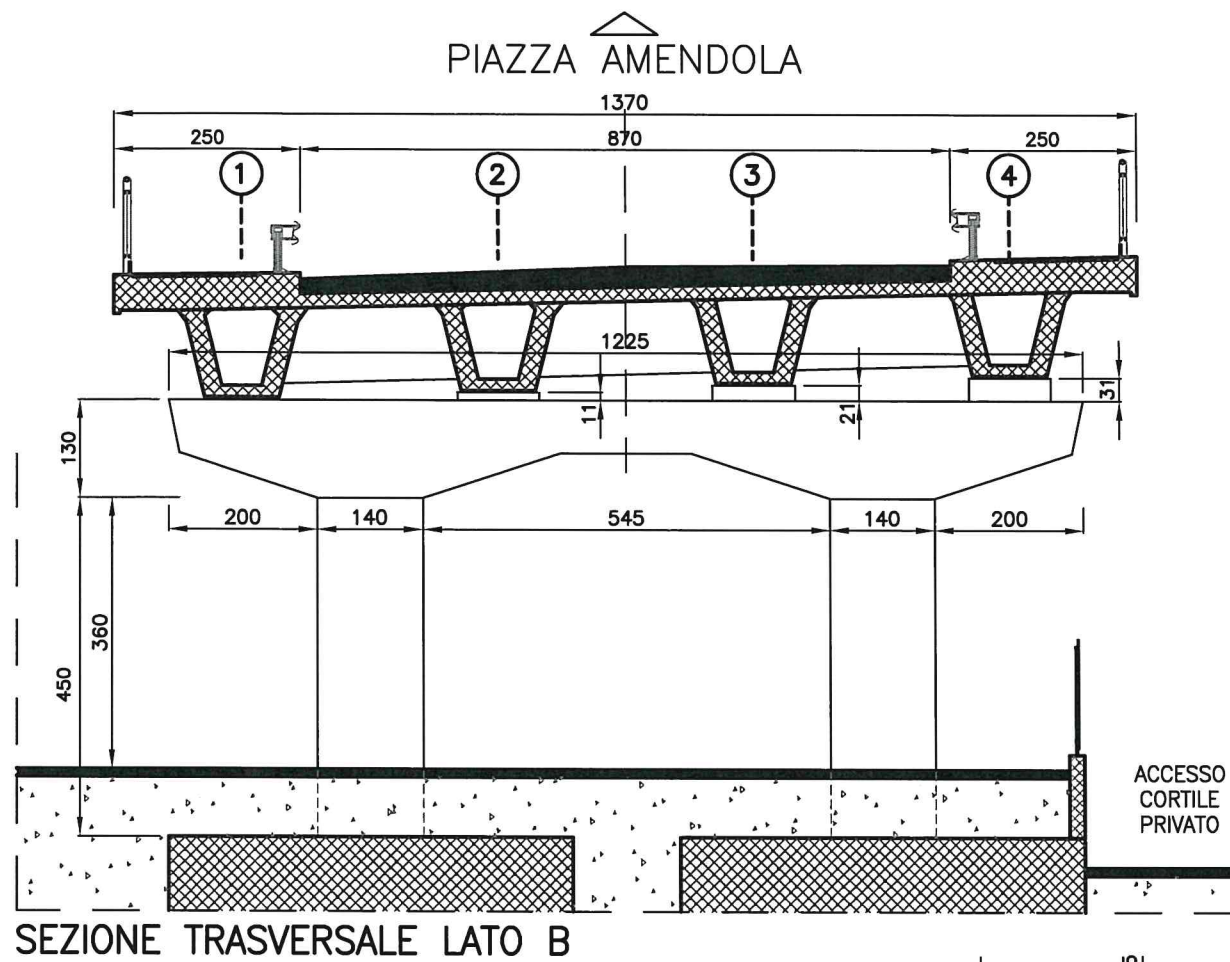
SEZIONE LONGITUDINALE













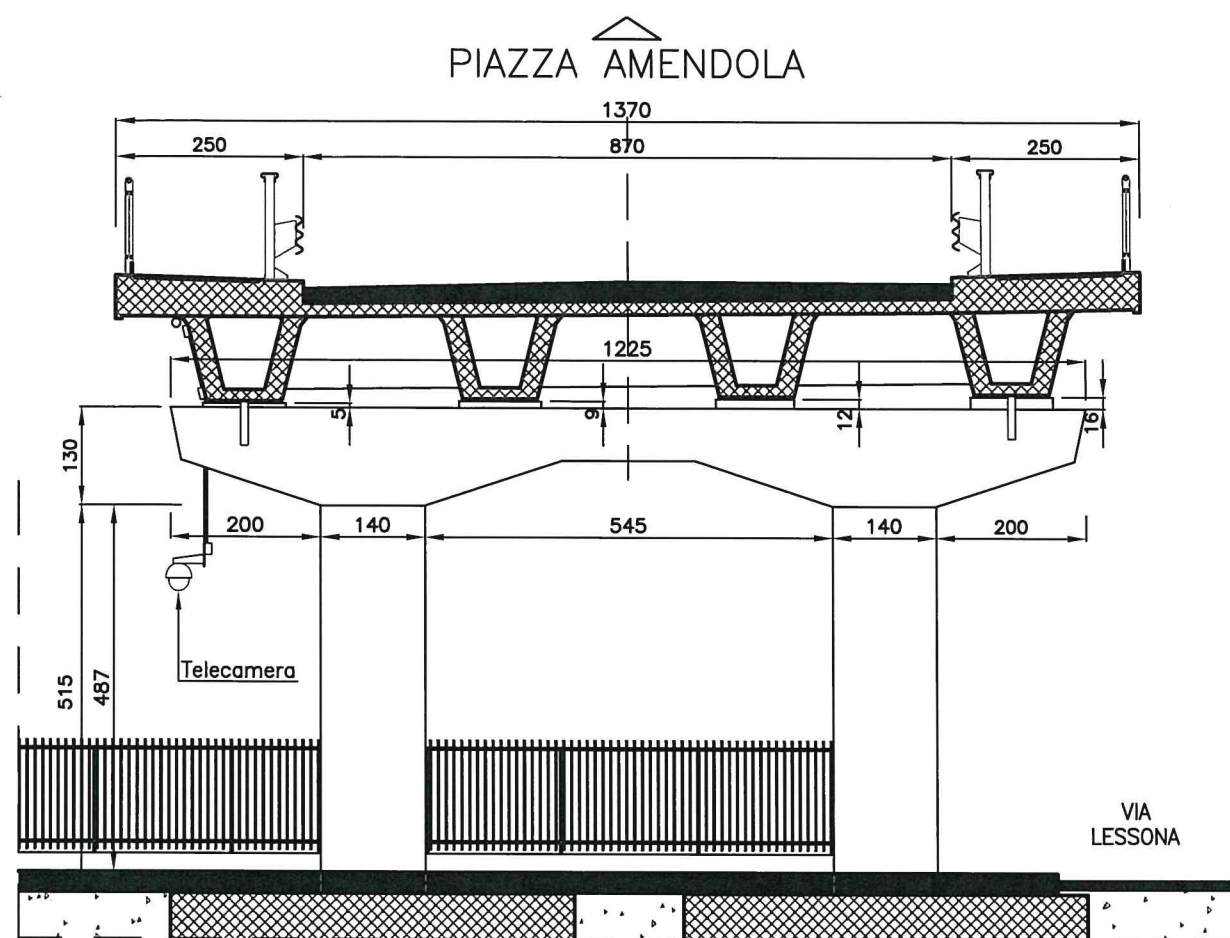




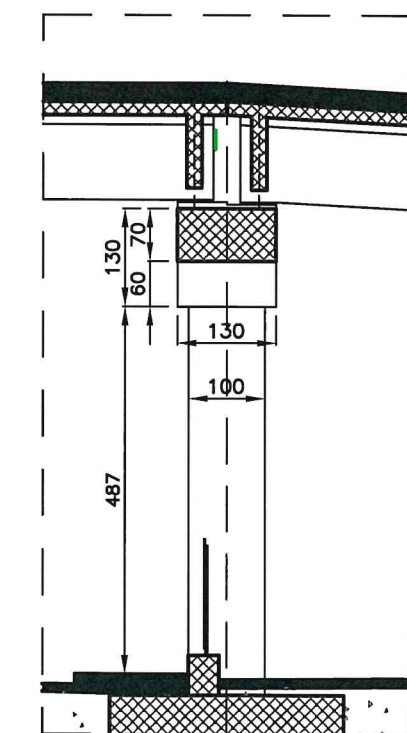




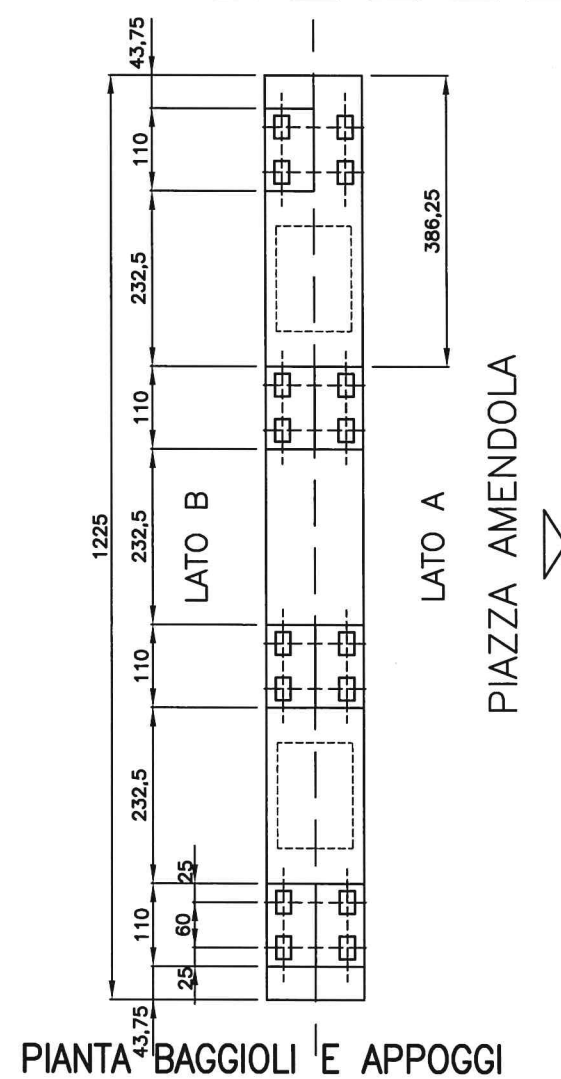




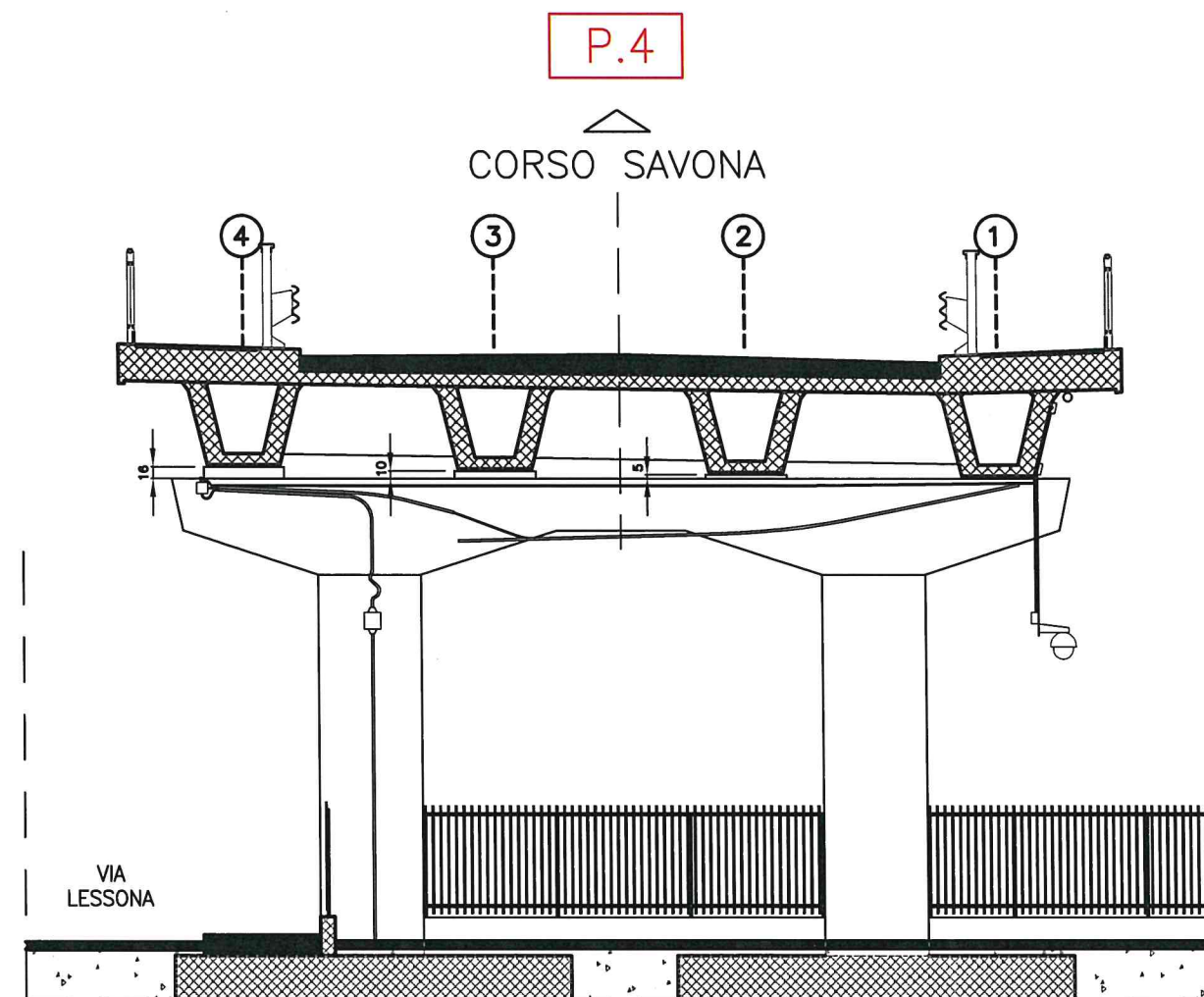
SEZIONE TRASVERSALE



SEZIONE LONGITUDINALE

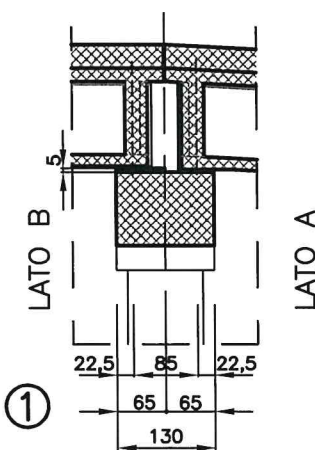


PIANTA BAGGIOLI E APPOGGI

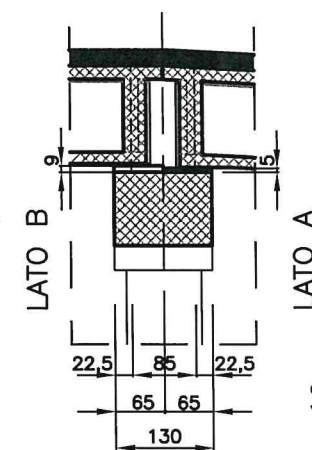


P.4

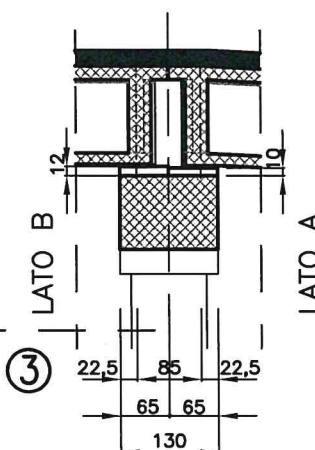
SEZIONE TRAVI ①



SEZIONE TRAVI ②



SEZIONE TRAVI ③



SEZIONE TRAVI ④

